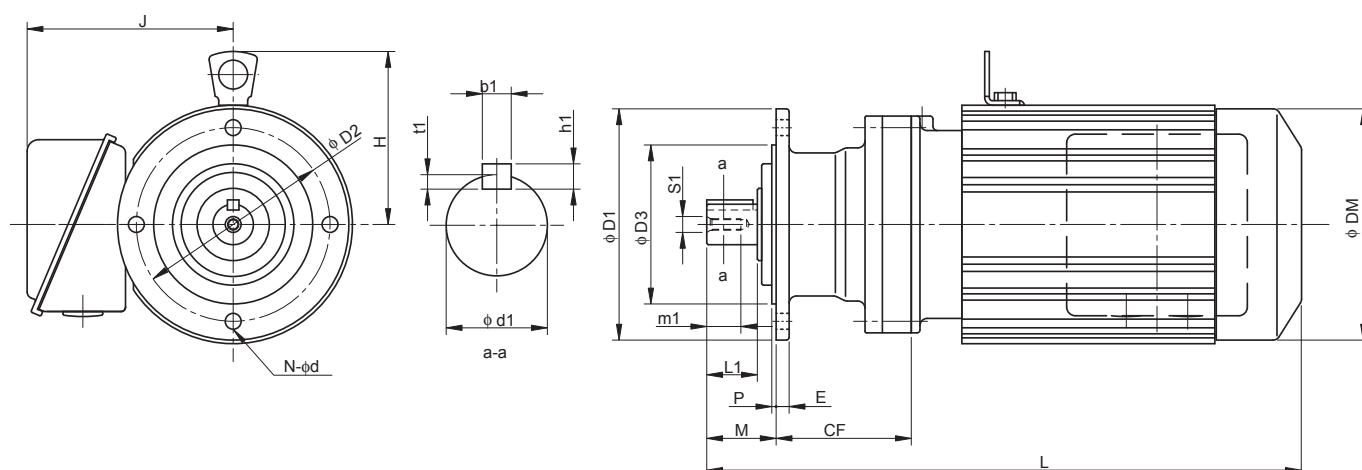


Dimension Tables Gearmotors (Universal Direction, V-Flange Mount)

CNVM^{Note 1} - 606□ to 609□

GEARMOTORS

Dimension Tables
CNVM

Frame size Note 5	CF	D1	D2	D3	M	E	P	N	d	H	Output Shaft Note 2, 3, 7						
											d1	L1	b1	h1	t1	S1	m1
606□	58	120	102	80	34	8	3	6	9	-	14	25	5	5	3	M5	16
607□	56	160	134	110	42	9	3	4	11	-	18	30	6	6	3.5	M6	16
608□	81	160	134	110	48	9	3	4	11	-	22	35	6	6	3.5	M6	16
609□	94	160	134	110	48	9	3	4	11	107	28	35	8	7	4	M8	20

Model Note 5, 6	Motor		Standard				With Brake			
	kW	P	L	J	DM	W(kg)	L	J	DM	W(kg)
CNVM01 - 606□ - (B) - Ratio	0.1	4	254	130	119	7	261	130	124	9
CNVM02 - 606□ - (B) - Ratio	0.2	4	272	130	124	8	300	130	124	10
CNVM03 - 606□ - (B) - Ratio	0.25	4	272	130	124	9	300	130	124	10
CNVM01 - 607□ - (B) - Ratio	0.1	4	260	130	119	9	267	130	124	10
CNVM02 - 607□ - (B) - Ratio	0.2	4	278	130	124	10	306	130	124	11
CNVM03 - 607□ - (B) - Ratio	0.25	4	278	130	124	10	306	130	124	11
CNVM05 - 607□ - (B) - Ratio	0.4	4	294	130	124	11	326	130	124	12
CNVM01 - 608□ - (B) - Ratio	0.1	4	286	130	119	12	293	130	124	13
CNVM02 - 608□ - (B) - Ratio	0.2	4	304	130	124	13	332	130	124	14
CNVM03 - 608□ - (B) - Ratio	0.25	4	304	130	124	13	332	130	124	14
CNVM05 - 608□ - (B) - Ratio	0.4	4	320	130	124	15	352	130	124	16
CNVM08 - 608□ - (B) - Ratio	0.55	4	361	140	148	19	404	140	148	20
CNVM1 - 608□ - (B) - Ratio	0.75	4	361	140	148	19	404	140	148	20
CNVM01 - 609□ - (B) - Ratio	0.1	4	304	130	119	13	311	130	124	15
CNVM02 - 609□ - (B) - Ratio	0.2	4	322	130	124	14	350	130	124	16
CNVM03 - 609□ - (B) - Ratio	0.25	4	322	130	124	14	350	130	124	16
CNVM05 - 609□ - (B) - Ratio	0.4	4	338	130	124	15	370	130	124	17
CNVM08 - 609□ - (B) - Ratio	0.55	4	379	140	148	19	422	140	148	22
CNVM1 - 609□ - (B) - Ratio	0.75	4	379	140	148	19	422	140	148	22
CNVM1H - 609□ - (B) - Ratio	1.1	4	412	145	160	22	474	145	160	27
CNVM2 - 609□ - (B) - Ratio	1.5	4	412	145	160	22	474	145	160	27

Note: 5. □ indicates 0 or 5, expressing combination with reduction ratio. Refer to the Selection Table for details.

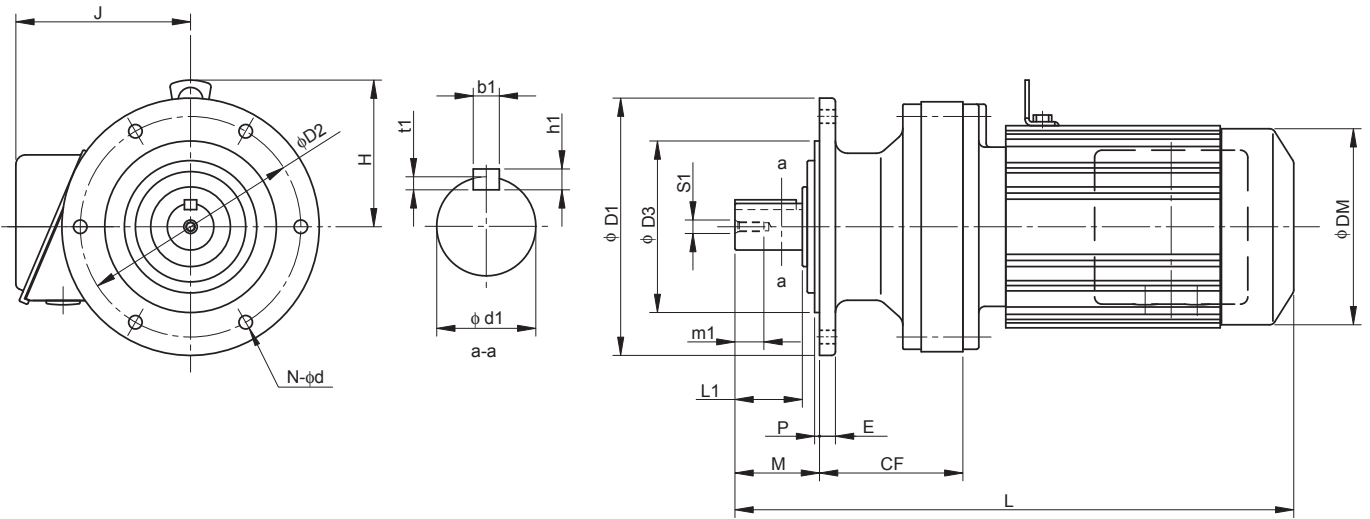
6. "B" after the frame size indicates models equipped with brake.

7. Dimension of shaft end: Refer to pages F-28 to F-29 for details.

8. Dimensions in above drawings are subject to change without notice.

Dimension Tables Gearmotors (Universal Direction, V-Flange Mount)

CNVM^{Note 1} - 610□ to 612□



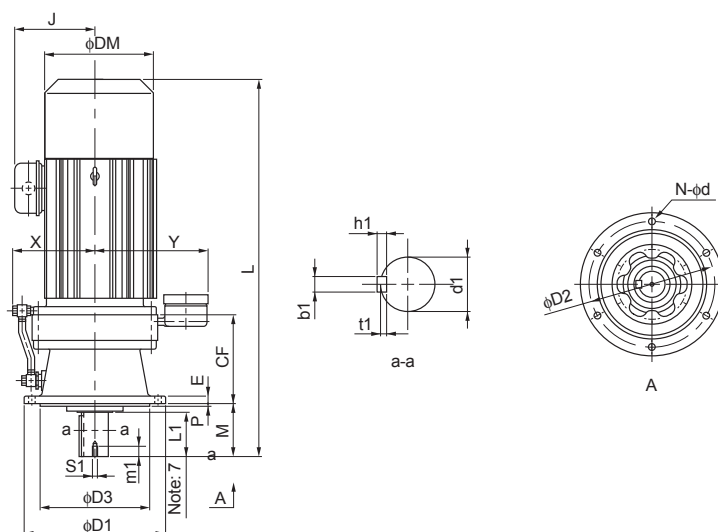
GEARMOTORS
Dimension Tables
CNVM

Frame size <small>Note 5</small>	CF	D1	D2	D3	M	E	P	N	d	H	Output Shaft <small>Note 2, 3, 7</small>						
											d1	L1	b1	h1	t1	S1	m1
610□	108	160	134	110	48	9	3	4	11	107	28	35	8	7	4	M8	20
611□	112	210	180	140	58	11	4	6	11	116	32	45	10	8	5	M8	20
612□	117	210	180	140	69	13	4	6	11	137	38	55	10	8	5	M8	20

Model <small>Note 5, 6</small>	Motor		Standard				With Brake			
	kW	P	L	J	DM	W(kg)	L	J	DM	W(kg)
CNVM02 - 610□ - (B) - Ratio	0.2	4	336	130	124	16	364	130	124	18
CNVM03 - 610□ - (B) - Ratio	0.25	4	336	130	124	16	364	130	124	18
CNVM05 - 610□ - (B) - Ratio	0.4	4	352	130	124	17	384	130	124	19
CNVM08 - 610□ - (B) - Ratio	0.55	4	393	140	148	21	436	140	148	24
CNVM1 - 610□ - (B) - Ratio	0.75	4	393	140	148	21	436	140	148	24
CNVM1H - 610□ - (B) - Ratio	1.1	4	426	145	160	25	488	145	160	30
CNVM2 - 610□ - (B) - Ratio	1.5	4	426	145	160	25	488	145	160	30
CNVM3 - 610□ - (B) - Ratio	2.2	4	446	152	173	29	509	152	173	35
CNVM05 - 611□ - (B) - Ratio	0.4	4	363	130	124	19	394	130	124	21
CNVM08 - 611□ - (B) - Ratio	0.55	4	403	140	148	22	452	140	148	25
CNVM1 - 611□ - (B) - Ratio	0.75	4	403	140	148	22	452	140	148	25
CNVM1H - 611□ - (B) - Ratio	1.1	4	436	145	160	25	493	145	160	30
CNVM2 - 611□ - (B) - Ratio	1.5	4	436	145	160	25	493	145	160	30
CNVM3 - 611□ - (B) - Ratio	2.2	4	456	152	173	29	519	152	173	35
CNVM4 - 611□ - (B) - Ratio	3.0	4	491	168	212	39	563	168	212	49
CNVM5 - 611□ - (B) - Ratio	3.7	4	491	168	212	39	563	168	212	49
CNVM05 - 612□ - (B) - Ratio	0.4	4	387	130	124	30	419	130	124	31
CNVM08 - 612□ - (B) - Ratio	0.55	4	423	140	148	31	466	140	148	34
CNVM1 - 612□ - (B) - Ratio	0.75	4	423	140	148	31	466	140	148	34
CNVM1H - 612□ - (B) - Ratio	1.1	4	456	145	160	35	518	145	160	40
CNVM2 - 612□ - (B) - Ratio	1.5	4	456	145	160	35	518	145	160	40
CNVM3 - 612□ - (B) - Ratio	2.2	4	476	152	173	39	539	152	173	46
CNVM4 - 612□ - (B) - Ratio	3.0	4	499	168	212	49	571	168	212	59
CNVM5 - 612□ - (B) - Ratio	3.7	4	499	168	212	49	571	168	212	59
CNVM8 - 612□ - (B) - Ratio	5.5	4	543	168	212	56	615	168	212	66

- Note: 1. □ indicates motor capacity.
 2. Dimension of shaft end diameter: Dimension tolerance conforms to JIS B 0401-1976 "h6."
 3. Dimension of shaft end key: Dimension tolerance conforms to JIS B 1301-1996 "Parallel Key."
 4. Pilot diameter ($\phi D3$): Dimension tolerance conforms to JIS B 0401-1976 "f8."

Dimension Tables Gearmotors (Vertical, Slow Speed Shaft Down, V-Flange Mount)

CVVM^{Note 1} - 613□ to 614□

Frame size <small>Note 5</small>	CF	D1	D2	D3	M	E	P	N	d	X	Y	Output Shaft <small>Note 2, 3, 7</small>						
												d1	L1	b1	h1	t1	S1	m1
613□	164	260	230	200	76	15	4	6	11	152	233	50	61	14	9	5.5	M10	18
614□	164	260	230	200	96	15	4	6	11	152	233	50	81	14	9	5.5	M10	18

Model <small>Note 5, 6</small>	Motor		Standard					With Brake			
	kW	P	L	J	DM	W(kg)	L	J	DM	W(kg)	
CVVM08 - 613□	- (B) - Ratio	0.55	4	477	140	148	51	520	140	148	54
CVVM1 - 613□	- (B) - Ratio	0.75	4	477	140	148	51	520	140	148	54
CVVM1H - 613□	- (B) - Ratio	1.1	4	510	145	160	55	572	145	160	60
CVVM2 - 613□	- (B) - Ratio	1.5	4	510	145	160	55	572	145	160	60
CVVM3 - 613□	- (B) - Ratio	2.2	4	530	152	173	58	593	152	173	65
CVVM4 - 613□	- (B) - Ratio	3.0	4	553	168	212	68	625	168	212	78
CVVM5 - 613□	- (B) - Ratio	3.7	4	553	168	212	68	625	168	212	78
CVVM8 - 613□	- (B) - Ratio	5.5	4	597	168	212	75	669	168	212	85
CVVM10 - 613□	- (B) - Ratio	7.5	4	620	213	251	90	715	213	251	108
CVVM15 - 613□	- (B) - Ratio	11	4	680	213	251	104	775	213	251	121
CVVM1 - 614□	- (B) - Ratio	0.75	4	497	140	148	52	540	140	148	55
CVVM1H - 614□	- (B) - Ratio	1.1	4	530	145	160	56	592	145	160	61
CVVM2 - 614□	- (B) - Ratio	1.5	4	530	145	160	56	592	145	160	61
CVVM3 - 614□	- (B) - Ratio	2.2	4	550	152	173	59	613	152	173	66
CVVM4 - 614□	- (B) - Ratio	3.0	4	573	168	212	69	645	168	212	79
CVVM5 - 614□	- (B) - Ratio	3.7	4	573	168	212	69	645	168	212	79
CVVM8 - 614□	- (B) - Ratio	5.5	4	617	168	212	76	689	168	212	86
CVVM10 - 614□	- (B) - Ratio	7.5	4	640	213	251	91	735	213	251	109
CVVM15 - 614□	- (B) - Ratio	11	4	700	213	251	104	795	213	251	122
CVVM20 - 614□	- (B) - Ratio	15	4	790	261	324	156	895	261	324	190

Note: 5. □ indicates 0 or 5, expressing combination with reduction ratio. Refer to the Selection Table for details.

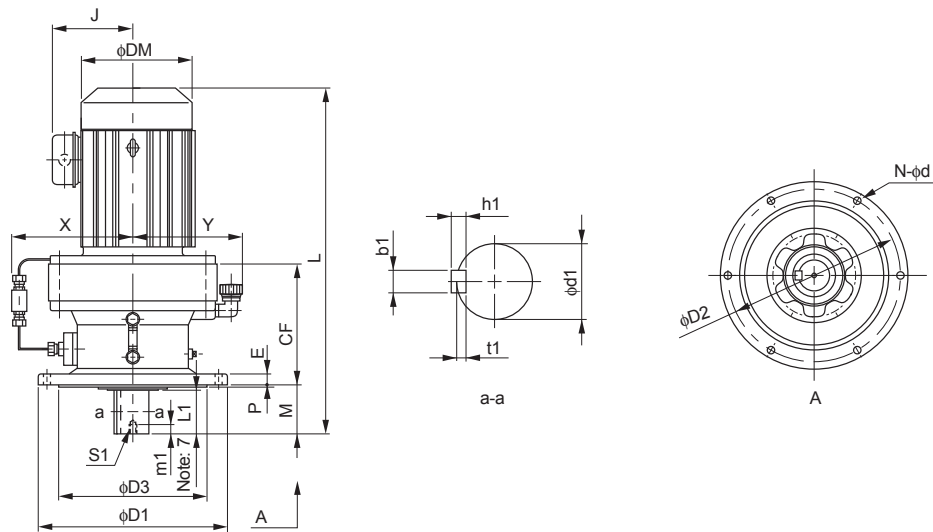
6. "B" after the frame size indicates models equipped with brake.

7. Dimension of shaft end: Refer to pages F-28 to F-29 for details.

8. Dimensions in above drawings are subject to change without notice.

Dimension Tables Gearmotors (Vertical, Slow Speed Shaft Down, V-Flange Mount)

CVVM^{Note 1} - 616□ to 617□

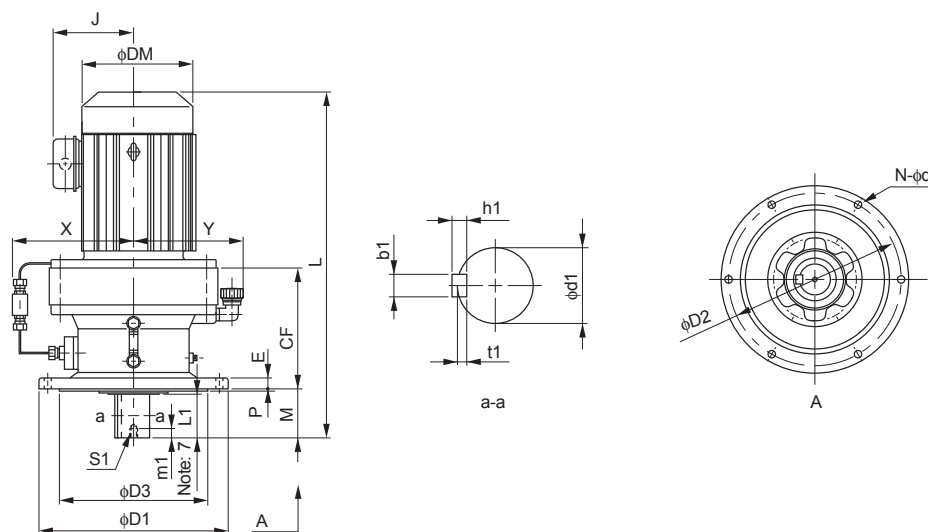


Frame size <small>Note 5</small>	CF	D1	D2	D3	M	E	P	N	d	X	Y	Output Shaft <small>Note 2, 3, 7</small>						
												d1	L1	b1	h1	t1	S1	m1
616□	219	340	310	270	89	20	4	6	11	217	200	60	80	18	11	7	M10	18
617□	258	400	360	316	94	22	5	8	14	222	225	70	84	20	12	7.5	M12	24

Model <small>Note 5, 6</small>	Motor		Standard				With Brake				
	kW	P	L	J	DM	W(kg)	L	J	DM	W(kg)	
CVVM1H - 616□	- (B) - Ratio	1.1	4	583	145	160	89	645	145	160	94
CVVM2 - 616□	- (B) - Ratio	1.5	4	583	145	160	89	645	145	160	94
CVVM3 - 616□	- (B) - Ratio	2.2	4	598	152	173	92	661	152	173	98
CVVM4 - 616□	- (B) - Ratio	3.0	4	621	168	212	101	693	168	212	111
CVVM5 - 616□	- (B) - Ratio	3.7	4	621	168	212	101	693	168	212	111
CVVM8 - 616□	- (B) - Ratio	5.5	4	665	168	212	108	737	168	212	118
CVVM10 - 616□	- (B) - Ratio	7.5	4	693	213	251	124	788	213	251	141
CVVM15 - 616□	- (B) - Ratio	11	4	753	213	251	138	848	213	251	155
CVVM20 - 616□	- (B) - Ratio	15	4	838	261	324	191	943	261	324	225
CVVM25 - 616□	- (B) - Ratio	18.5	4	933	328	394	267	1098	328	394	318
CVVM30 - 616□	- (B) - Ratio	22	4	933	328	394	267	1098	328	394	318
CVVM4 - 617□	- (B) - Ratio	3.0	4	680	168	212	144	752	168	212	154
CVVM5 - 617□	- (B) - Ratio	3.7	4	680	168	212	144	752	168	212	154
CVVM8 - 617□	- (B) - Ratio	5.5	4	724	168	212	151	796	168	212	161
CVVM10 - 617□	- (B) - Ratio	7.5	4	742	213	251	166	837	213	251	184
CVVM15 - 617□	- (B) - Ratio	11	4	802	213	251	180	897	213	251	198
CVVM20 - 617□	- (B) - Ratio	15	4	882	261	324	234	987	261	324	268
CVVM25 - 617□	- (B) - Ratio	18.5	4	977	328	394	306	1142	328	324	357
CVVM30 - 617□	- (B) - Ratio	22	4	977	328	394	306	1142	328	324	357
CVVM40 - 617□	- (B) - Ratio	30	4	977	328	394	323	1142	328	324	366

- Note: 1. □ indicates motor capacity.
 2. Dimension of shaft end diameter: Dimension tolerance conforms to JIS B 0401-1976 "h6."
 3. Dimension of shaft end key: Dimension tolerance conforms to JIS B 1301-1996 "Parallel Key."
 4. Pilot diameter ($\phi D3$): Dimension tolerance conforms to JIS B 0401-1976 "f8."

Dimension Tables Gearmotors (Vertical, Slow Speed Shaft Down, V-Flange Mount)

CVVM^{Note 1} - 618□ to 619□

Frame size Note 5	CF	D1	D2	D3	M	E	P	N	d	X	Y	Output Shaft Note 2, 3, 7						
												d1	L1	b1	h1	t1	S1	m1
618□	279	430	390	345	110	22	5	8	18	237	240	80	100	22	14	9	M12	24
619□	320	490	450	400	145	30	6	12	18	265	270	95	125	25	14	9	M20	34

Model Note 5, 6	Motor		Standard				With Brake				
	kW	P	L	J	DM	W(kg)	L	J	DM	W(kg)	
CVVM4 - 618□	- (B) - Ratio	3.0	4	717	168	212	170	789	168	212	180
CVVM5 - 618□	- (B) - Ratio	3.7	4	717	168	212	170	789	168	212	180
CVVM8 - 618□	- (B) - Ratio	5.5	4	761	168	212	178	833	168	212	188
CVVM10 - 618□	- (B) - Ratio	7.5	4	779	213	251	193	874	213	251	211
CVVM15 - 618□	- (B) - Ratio	11	4	839	213	251	207	934	213	251	225
CVVM20 - 618□	- (B) - Ratio	15	4	919	261	324	267	1024	261	324	296
CVVM25 - 618□	- (B) - Ratio	18.5	4	1014	328	394	333	1179	328	394	384
CVVM30 - 618□	- (B) - Ratio	22	4	1014	328	394	333	1179	328	394	384
CVVM40 - 618□	- (B) - Ratio	30	4	1014	328	394	350	1179	328	394	393
CVVM50 - 618□	- (B) - Ratio	37	4	1129	328	394	398	1344	328	394	495
CVVM60 - 618□	- (B) - Ratio	45	4	1129	328	394	398	1344	328	394	495
CVVM8 - 619□	- (B) - Ratio	5.5	4	857	168	212	250	929	168	212	260
CVVM10 - 619□	- (B) - Ratio	7.5	4	870	213	251	263	965	213	251	281
CVVM15 - 619□	- (B) - Ratio	11	4	930	213	251	277	1025	213	251	295
CVVM20 - 619□	- (B) - Ratio	15	4	995	261	324	330	1100	261	324	365
CVVM25 - 619□	- (B) - Ratio	18.5	4	1090	328	394	408	1255	328	394	453
CVVM256 - 619□	- (B) - Ratio	18.5	6	1090	328	394	421	1255	328	394	466
CVVM30 - 619□	- (B) - Ratio	22	4	1090	328	394	408	1255	328	394	453
CVVM40 - 619□	- (B) - Ratio	30	4	1090	328	394	421	1255	328	394	466
CVVM406 - 619□	- (B) - Ratio	30	6	1205	328	394	459	1420	328	394	556
CVVM50 - 619□	- (B) - Ratio	37	4	1205	328	394	459	1420	328	394	556
CVVM506 - 619□	- (B) - Ratio	37	6	1205	328	394	459	1420	328	394	556
CVVM60 - 619□	- (B) - Ratio	45	4	1205	328	394	459	1420	328	394	556

Note: 5. □ indicates 0 or 5, expressing combination with reduction ratio. Refer to the Selection Table for details.

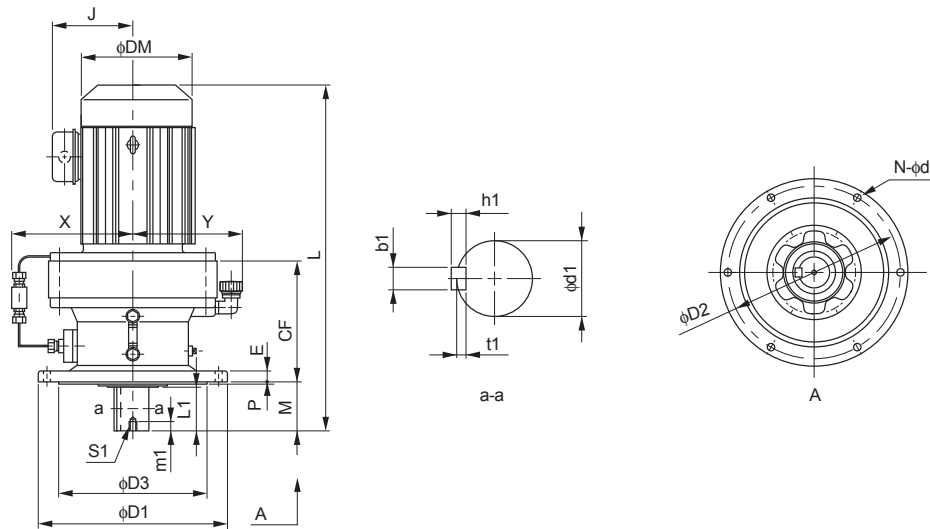
6. "B" after the frame size indicates models equipped with brake.

7. Dimension of shaft end: Refer to pages F-28 to F-29 for details.

8. Dimensions in above drawings are subject to change without notice.

Dimension Tables Gearmotors (Vertical, Slow Speed Shaft Down, V-Flange Mount)

CVVM - 6205 to 6215



GEARMOTORS
Dimension Tables
CVVM

Frame size	CF	D1	D2	D3	M	E	P	N	d	X	Y	Output Shaft Note 2, 3, 6						
												d1	L1	b1	h1	t1	S1	m1
6205	298	455	405	355	204	30	5	8	22	341	287	100	165	28	16	10	M20	34
6215	323	490	440	390	203	35	7	8	24	348	306	110	165	28	16	10	M20	34

Model	Note 5	Motor		Standard				With Brake			
		kW	P	L	J	DM	W(kg)	L	J	DM	W(kg)
CVVM15 - 6205	(B) - Ratio	11	4	972	213	251	299	1067	213	251	317
CVVM20 - 6205	(B) - Ratio	15	4	1042	261	324	353	1147	261	324	389
CVVM206 - 6205	(B) - Ratio	15	6	1127	328	394	428	1292	328	394	473
CVVM25 - 6205	(B) - Ratio	18.5	4	1127	328	394	428	1292	328	394	473
CVVM30 - 6205	(B) - Ratio	22	4	1127	328	394	428	1292	328	394	473
CVVM306 - 6205	(B) - Ratio	22	6	1127	328	394	441	1292	328	394	486
CVVM40 - 6205	(B) - Ratio	30	4	1127	328	394	441	1292	328	394	486
CVVM406 - 6205	(B) - Ratio	30	6	1242	328	394	479	1457	328	394	573
CVVM50 - 6205	(B) - Ratio	37	4	1242	328	394	479	1457	328	394	573
CVVM506 - 6205	(B) - Ratio	37	6	1242	328	394	479	1457	328	394	573
CVVM60 - 6205	(B) - Ratio	45	4	1242	328	394	479	1457	328	394	573
CVVM606 - 6205	(B) - Ratio	45	6	1297	378	484	572	-	-	-	-
CVVM75 - 6205	(B) - Ratio	55	4	1297	378	484	572	-	-	-	-
CVVM15 - 6215	(B) - Ratio	11	4	996	213	251	377	1091	213	251	395
CVVM20 - 6215	(B) - Ratio	15	4	1066	261	324	432	1171	261	324	467
CVVM206 - 6215	(B) - Ratio	15	6	1151	328	394	501	1316	328	394	546
CVVM25 - 6215	(B) - Ratio	18.5	4	1151	328	394	501	1316	328	394	546
CVVM256 - 6215	(B) - Ratio	18.5	6	1151	328	394	514	1316	328	394	559
CVVM30 - 6215	(B) - Ratio	22	4	1151	328	394	501	1316	328	394	546
CVVM306 - 6215	(B) - Ratio	22	6	1151	328	394	514	1316	328	394	559
CVVM40 - 6215	(B) - Ratio	30	4	1151	328	394	514	1316	328	394	559
CVVM406 - 6215	(B) - Ratio	30	6	1266	328	394	569	1481	328	394	664
CVVM50 - 6215	(B) - Ratio	37	4	1266	328	394	569	1481	328	394	664
CVVM506 - 6215	(B) - Ratio	37	6	1266	328	394	569	1481	328	394	664
CVVM60 - 6215	(B) - Ratio	45	4	1266	328	394	569	1481	328	394	664
CVVM606 - 6215	(B) - Ratio	45	6	1321	378	484	662	-	-	-	-
CVVM75 - 6215	(B) - Ratio	55	4	1321	378	484	662	-	-	-	-

- Note: 1. indicates motor capacity.
 2. Dimension of shaft end diameter: Dimension tolerance conforms to JIS B 0401-1976 "h6."
 3. Dimension of shaft end key: Dimension tolerance conforms to JIS B 1301-1996 "Parallel Key."
 4. Pilot diameter ($\phi D3$): Dimension tolerance conforms to JIS B 0401-1976 "f8."